

IMSCOM

:IMSC Ontology Manager

Faculty : Prof. Dennis McLeod, Computer Science

Students : Seokkyung Chung, Hyun Woong Shin,
Sang-Soo Sung

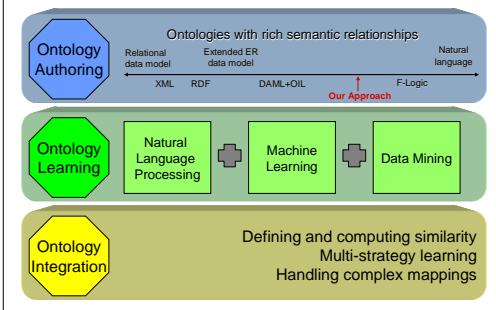
Research Goal

- Motivation
 - Manually constructing and integrating ontologies are tedious and error-prone tasks
 - A firm collection of high level modeling primitives is needed
- Goal
 - Semi-automated ontology construction and integration
 - Support high accessibility and multiple views for ontology presentation
 - Focused on a powerful semantic model

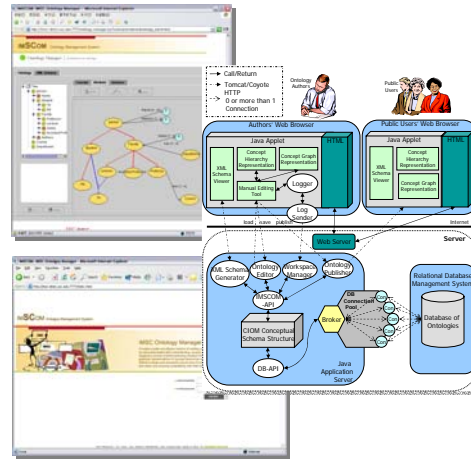
Role in IMSC

- IMSCOM project will be applicable to a broad range of ontology-related projects at IMSC
- Communication vision project: an immersive environment for trainees and experts
 - Crisis management in Homeland Security Center project - CREATE
 - News story structuring
 - Topic/event detection from data streams

Research Approach



Accomplishments



Uniqueness and Related Work



- Publication
 - L.Khan, D. McLeod, and E. H. Hovy. Retrieval effectiveness of an ontology-based model for information selection. *The VLDB Journal*, 13(1):71-85, 2004.

5-Year Plan

