

# Recognition of Objects and Events in Video



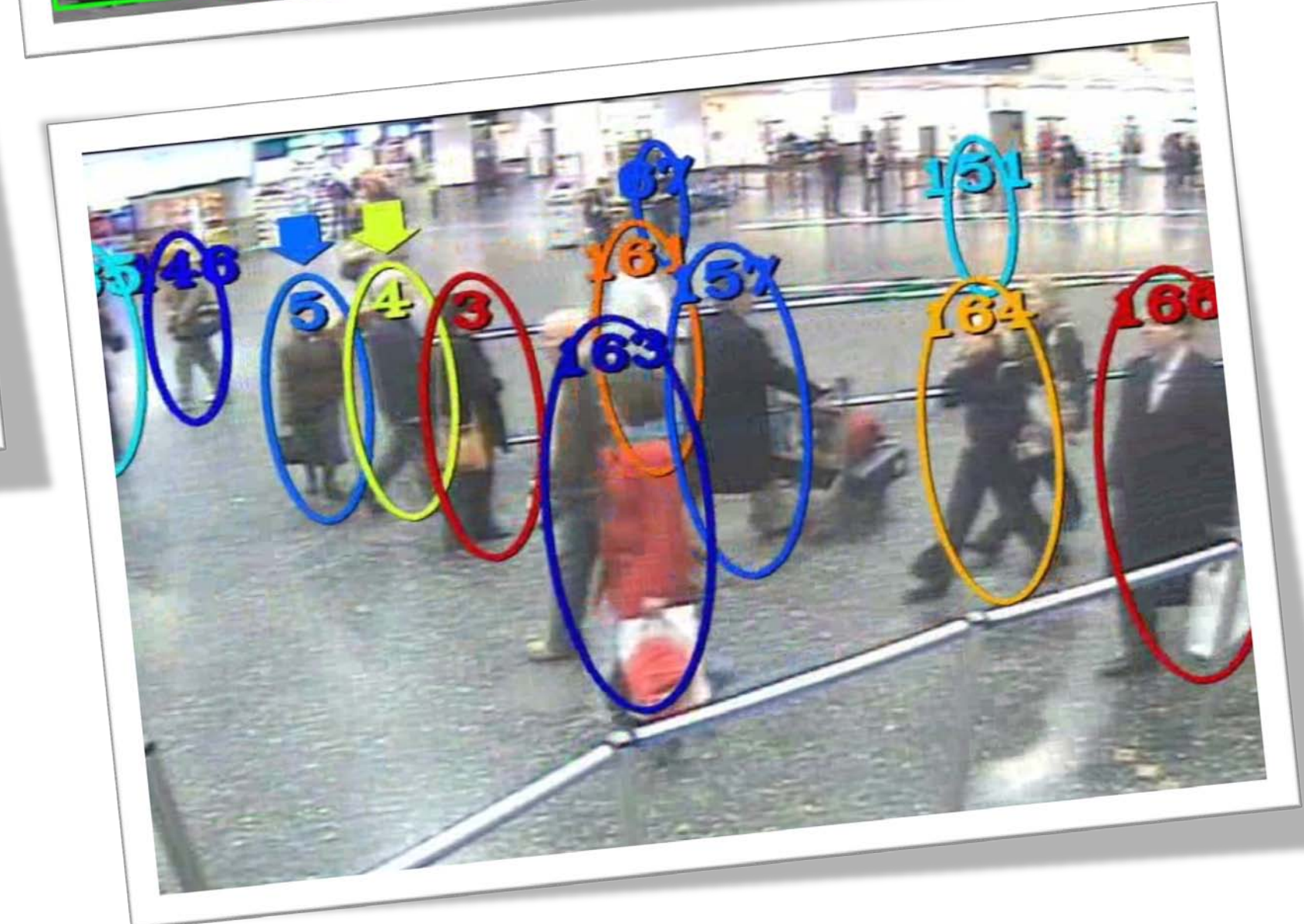
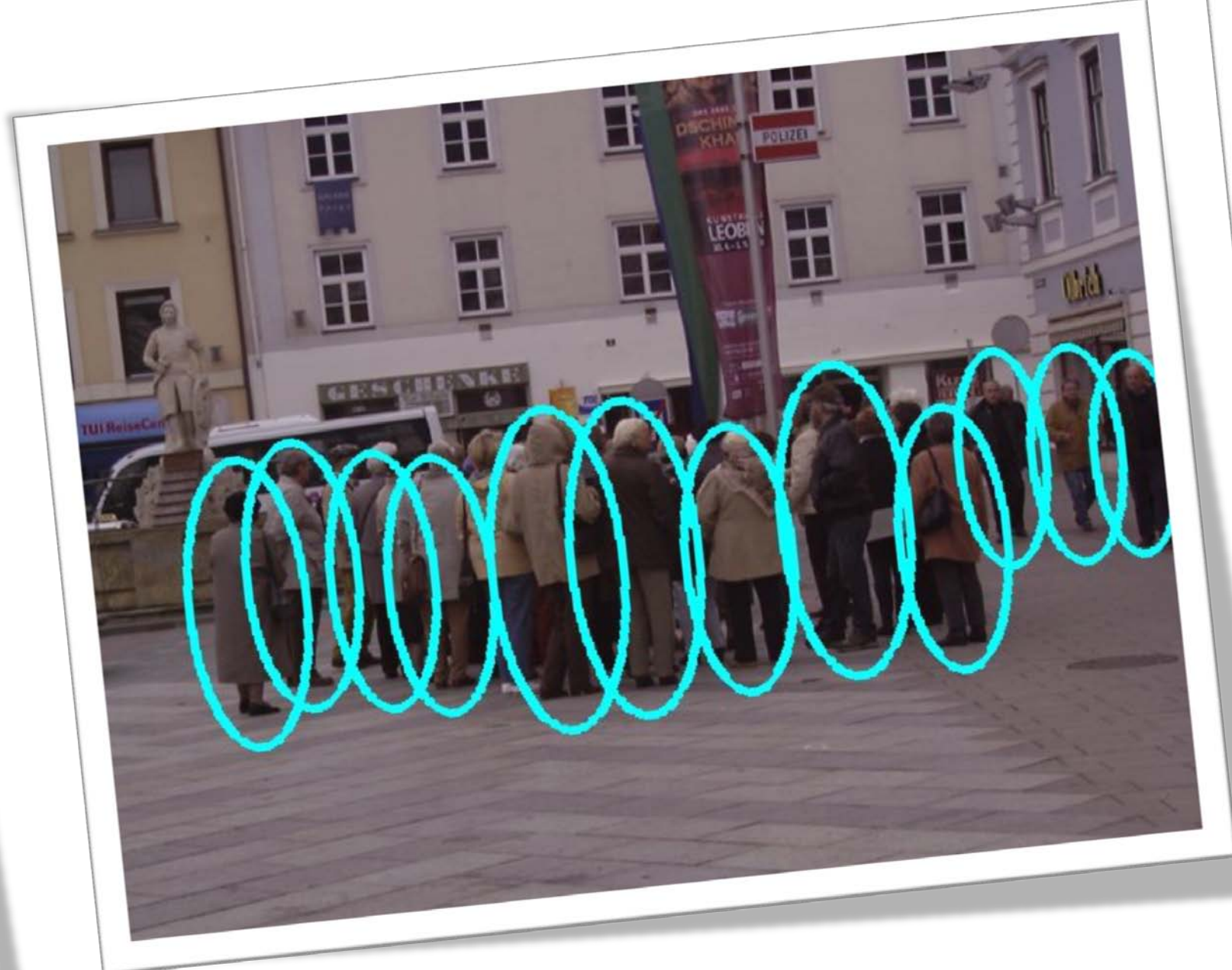
Sung Chun Lee ([SungChun.Lee@usc.edu](mailto:SungChun.Lee@usc.edu)) and Ram Nevatia ([nevatia@usc.edu](mailto:nevatia@usc.edu))

Integrated Media Systems Center  
University of Southern California

iCampus ✓iWatch CT

## ❖ Object Detection & Tracking

- Focus on Pedestrians & Vehicles
- Part-based Detection: Cluster Boosted Tree Classifier
- Tracking by Association
  - Hierarchical tracking
  - Online and offline learning
  - Details in CVPR 2010 Papers



## ❖ Event Detection (Mid-Range)

- Trajectory based event detection
  - Left Luggage Event
  - Meeting Event
  - Restricted Zone Entry Event



## ❖ Event Detection (Near-Range)

- Use pose tracks
  - Simultaneous Activity & Pose Inference
  - Probabilistic Action Networks
  - Details in CVPR 2010 Paper

